

DUR-A-GARD™

HIGH BUILD EPOXY COATING



If you are looking for a high build epoxy floor coating that's as practical as it is attractive, Dur-A-Gard™ has you covered.

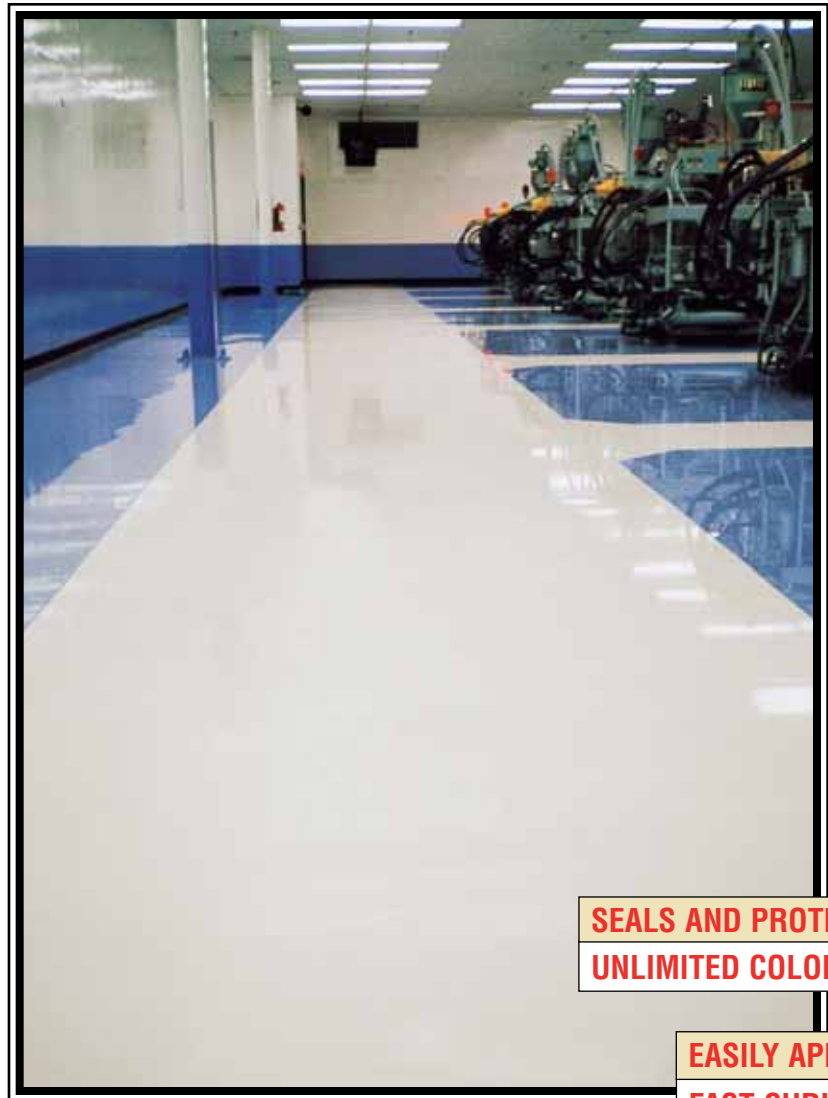
Dur-A-Gard™—part of the Dur-A-Flex® family of flooring systems—is a two-component, 100 percent solids, colored epoxy designed for flooring applications subjected to moderate traffic and chemical exposure.

This high-gloss, tile-like finish is stain resistant and formulated to deter oil, grease, gasoline, strong detergents and salt. Dur-A-Gard™ can be easily rolled out as a coating, or when fillers are added, screeded out as a self-leveling floor system.

Dur-A-Gard™ is available in standard colors, and can be custom mixed to fit your special requirements.

A Poly-Thane™ topcoat is often specified to increase chemical and stain resistance.

Dur-A-Gard™ is easy to clean, has good color stability, and with its low viscosity, is easy to apply. It cures blush-free even at high humidity levels, and is available with an optional fast-curing hardener when you need to minimize down time.



SEALS AND PROTECTS
UNLIMITED COLORS

EASILY APPLIED
FAST CURING

Typical uses:

- clean rooms
- laboratories
- light assembly areas
- laundries
- marine uses
- pharmaceutical plants
- warehouses

Another special formulation, Dur-A-Gard OPF™, is designed to be used as the first or second topcoat to yield a uniform "orange peel" finish. Also, OPF formula offers a low-glare finish, making it perfect for applications where light sensitivity or reflections are an issue.

Dur-A-Gard SL™ is a self-leveling version of Dur-A-Gard™ coating, and is installed up to 1/8" thick. It consists of a prime coat, a self-leveling matrix coat, and a performance topcoat.

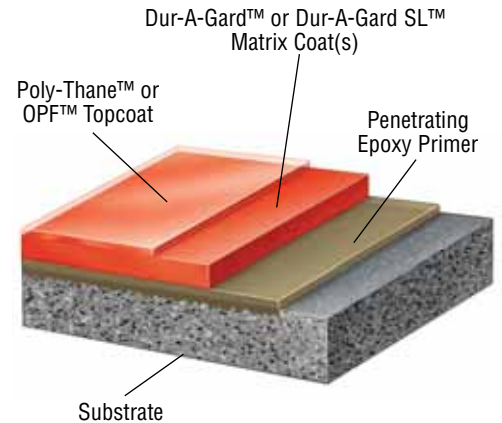
Dur-A-Gard™ High Build Epoxy Coating

Physical Properties

	Test Method	Nominal 1/8"
Hardness (Shore D)	ASTM D-2240	70-80
Compressive Strength	ASTM D-695	16,000 psi
	ASTM C-579	10,500 psi
Tensile Strength	ASTM D-638	3,000 psi
	ASTM C-307	1,950 psi
Tensile Elongation	ASTM D-638	7.50%
Flexural Strength	ASTM D-790	4,000 psi
	ASTM C-580	2,900 psi
Flexural Modulus of Elasticity	ASTM D-790	5.5 x 10 ⁵
Linear Expansion	ASTM D-696	2 x 10 ⁻⁵
Bond Strength to Concrete	ASTM D-4541	400 psi substrate fails
Indentation	ML D-3134	.025 MAX
Impact Resistance	ML D-3134	Pass
Water Absorption	ASTM D-570	0.04%
Heat Resistance Limitation		140°F-200°F
Flammability	ASTM D-635	Self Extinguishing
Flame Spread/NFPA 101	ASTM E-84	Class A
Abrasion Resistance	ASTM D-4060	
CS17 Wheel 1000 GM Load 1000 Cycles		35 mg loss
Coefficient of Friction	ASTM D-2047	
Orange Peel		0.8
Smooth		0.7
VOC Content		Regular, Fast, Crete Gard and Gard SH = 3.45 g/l Dur-A-Gard OPF = 59 g/l



Full-size color chart available upon request.
Custom color matches available.



TYPICAL DUR-A-GARD™ APPLICATION

Chemical Resistance Guide Legend: R=Recommended, S=Splash and Spill, N=Not Recommended

Reagent*	Reg. or Fast	OPF	Reagent*	Reg. or Fast	OPF
Acetic Acid 10%	R	R	Hydrofluoric Acid 40%	N	N
Acetone	N	N	Hydraulic Fluid	R	R
Acetic Acid Glacial 100%	N	N	Isopropyl Alcohol	S	S
Ammonium Hydroxide 28%	R	R	Lactic Acid 20%	R	R
Benzene	N	N	Methyl Isobutyl Ketone	N	N
Brake Fluid	R	R	Methylene Chloride	N	N
Calcium Chloride 30%	R	R	Mineral Spirits	S	S
Clorox (Full Strength)	R	R	Motor Oil	R	R
Coca Cola	R	R	Mustard	R	R
Cottage Cheese	R	R	Nitric Acid 10%	N	N
Chromic Acid 10%	S	S	Phosphoric Acid 85%	N	N
Citric Acid 30%	S	S	Salt Water	R	R
Ethyl Alcohol 95%	N	N	Spic and Span 30%	R	R
Ethylene Glycol	R	R	Syrup	R	R
Ethylene Dichloride 10%	R	R	Sulfuric Acid 30%	S	S
Ferric Chloride	R	R	Sodium Hydroxide 30%	R	R
Gasoline	R	R	Silver Nitrate	R	R
Glycerin	R	R	Tide Detergent	R	R
Hydrogen Peroxide 6%	R	R	Trichloroethylene	N	N
Hydrochloric Acid 30%	R	R	Tri-sodium Phosphate	R	R

*Reagents listed in bold may stain. Chemical and stain resistance can be improved by using Poly-Thane™ as a topcoat(s).
Note: Testing should not be conducted until coating cures 7-10 days at 70°F.

DUR-A-FLEX Inc. 95 Goodwin Street East Hartford, CT 06108
Tel 800-253-3539 Fax 860-528-2802 www.dur-a-flex.com

PERFORMANCE FLOORING SOLUTIONS
DUR-A-FLEX® Inc.
EPOXIES • MMA • URETHANES
COLORED QUARTZ AGGREGATES