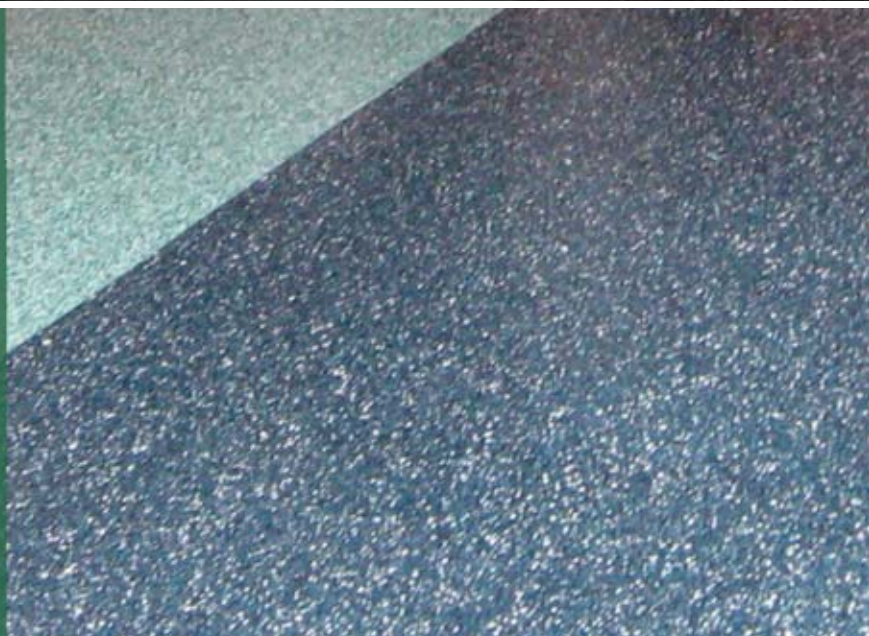




# HYBRI-FLEX

HYBRID  
FLOORING  
SYSTEMS



**DUR-A-FLEX<sup>®</sup> Inc.**



# Reduce Lost Revenue

Each year, property owners spend an estimated 2.4 billion dollars on facility repairs as a result of moisture-related flooring failures.

Hybri-Flex flooring systems were created to help solve the problems of flooring failure due to moisture migration.

**DUR-A-FLEX<sup>®</sup> Inc.**



# HYBRI-FLEX

All of the systems in the Hybri-Flex family tolerate moisture levels up to 12 pounds (and RH less than 92%) and provide protection from elevated moisture levels typically found in concrete. The systems allow you to eliminate the additional step of applying a costly mitigation system.

Hybri-Flex flooring systems are the perfect solution for fast track construction projects because they can be installed over 5-7 day old concrete\* rather than waiting months for the concrete to reach acceptable moisture levels. In most applications, no priming is required so the time and steps to deliver a seamless floor are reduced. Business disruptions for the replacement of failed flooring are also eliminated.

The Hybri-Flex series of floor systems can be customized to meet many of today's specific challenges such as outdoor applications, spaces that need to remain occupied, or installations that don't permit downtime.

Hybri-Flex flooring systems offer cutting edge technology and are the long lasting alternative to today's seamless flooring choices. They are the cost effective solution to other multi-step flooring installations.

\*Consult your local Dur-A-Flex representative for concrete mix design specifications

[www.Hybri-Flex.com](http://www.Hybri-Flex.com)



# Installs in Less Time and Reduces

## **HYBRI-FLEX Series M**

The system to use when you have no tolerance for downtime. It can be installed in 75% less time than other traditional flooring systems that require a mitigation system. Closures or downtime for hospitals, restaurants and educational facilities is a major concern and expense; the fast cure of Hybri-Flex M will save time on the installation and allow you to open sooner and respond quickly to the needs of your customers. The system has very good wear resistance which will keep your floor looking newer longer, and it is the best product for UV stability so it can be installed outdoors. Hybri-Flex M is available in a wide range of solid colors as well as decorative granular quartz and chip blends. Custom color matches and blends are also available.

Consider Hybri-Flex Series M for:

- Waterparks / Pool Areas
- Indoor and Outdoor Walkways
- Restaurants
- Veterinary Facilities
- Educational Facilities
- Retail
- Pharmaceutical Plants
- Healthcare Facilities

## **HYBRI-FLEX Series A**

This system has no odor, making it ideal for use in occupied spaces where a high gloss finish is desired. Facilities that cater to the public will value this system because it can be installed while your business stays open. Customer convenience means staying open and in spaces like office buildings, medical facilities and shopping centers where staying open is the only option, installing the Hybri-Flex A system will decrease the likelihood of loss of revenue and customer inconvenience due to closing for renovations. Hybri-Flex A is available in decorative quartz and chip blends. Custom color matches and blends are also available.

Consider Hybri-Flex Series A for:

- Malls
- Hospitals
- Labs
- Commercial Businesses
- Educational Facilities

# 1-800-253-3539



# Interruption to Your Business

## HYBRI-FLEX Series E

The most cost effective solution to traditional seamless floor systems. Facility owners spend a lot of time researching the price of flooring and they don't always have the right budget for what they want. Installation costs for other seamless flooring systems tend to be higher because they take longer to install. The components in the Hybri-Flex E system allow for two steps in the application process to be achieved in one step. Since the system can be installed quickly and cost effectively, there is more time to conduct business and improve productivity. Hybri-Flex E is available in decorative quartz and chip blends as well as a variety of solid colors. Custom color matches and blends are also available.

Consider Hybri-Flex Series E for:

- Manufacturing Areas
- Pharmaceutical Plants
- Warehouses

## INDUSTRY CERTIFICATION AGENCIES:



United States  
Green Building  
Council



United States  
Food and Drug  
Administration



United States  
Department of  
Agriculture



Food Safety and  
Inspection  
Service



National  
Sanitation  
Foundation



Canadian Food  
Inspection  
Agency

**DUR-A-FLEX<sup>®</sup> Inc.**

# HYBRI-FLEX

The Hybri-Flex series of floor systems can be customized to meet many of today's specific challenges such as outdoor applications, spaces that need to remain occupied, or installations that don't permit downtime.

**HYBRI-FLEX Series M**

**HYBRI-FLEX Series A**

**HYBRI-FLEX Series E**